

I.H. 667.48

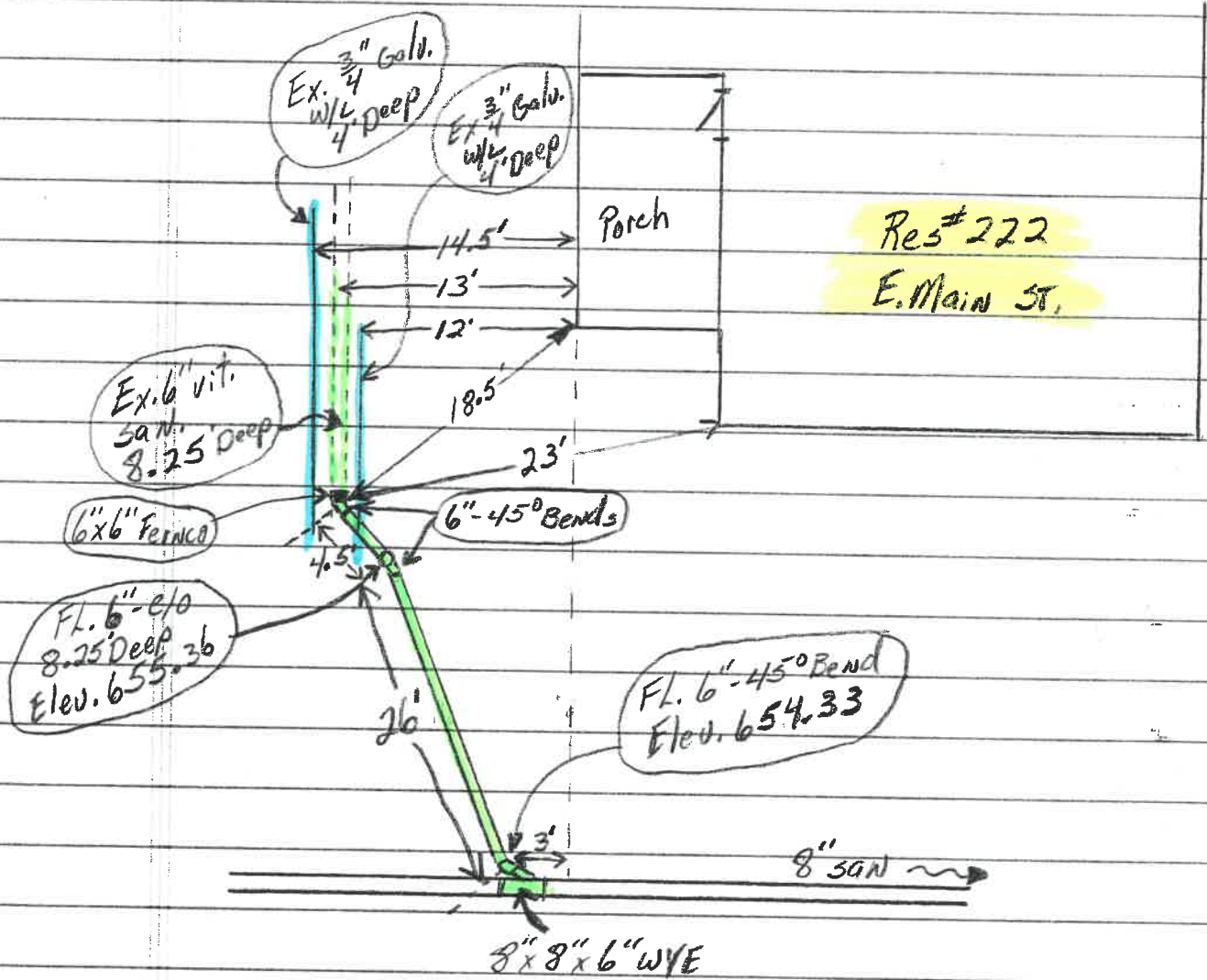
6"-c/d 12.12  
8"x8"x6" WYE 13.15

E. Main ST.

Date Installed: 3-3-04

Installed by: Vernon Nagel Const.

Inspected by: Rex Moll

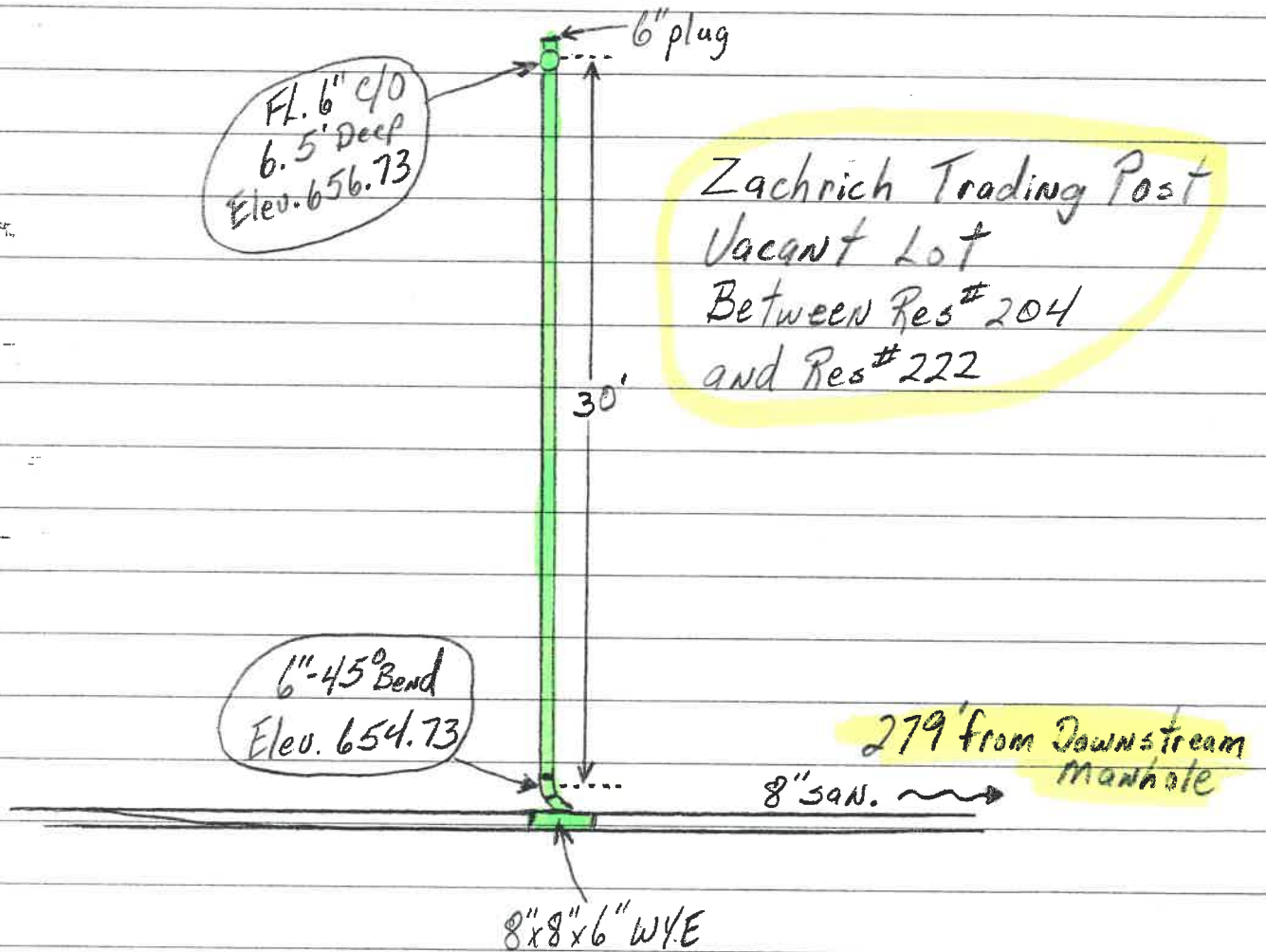


E. Main St

Date Installed: 3-4-04

Installed by: Vernon Nagel Constr.

Inspected by: Rex Moll



E. Main St.

Date Installed: 3-4-04

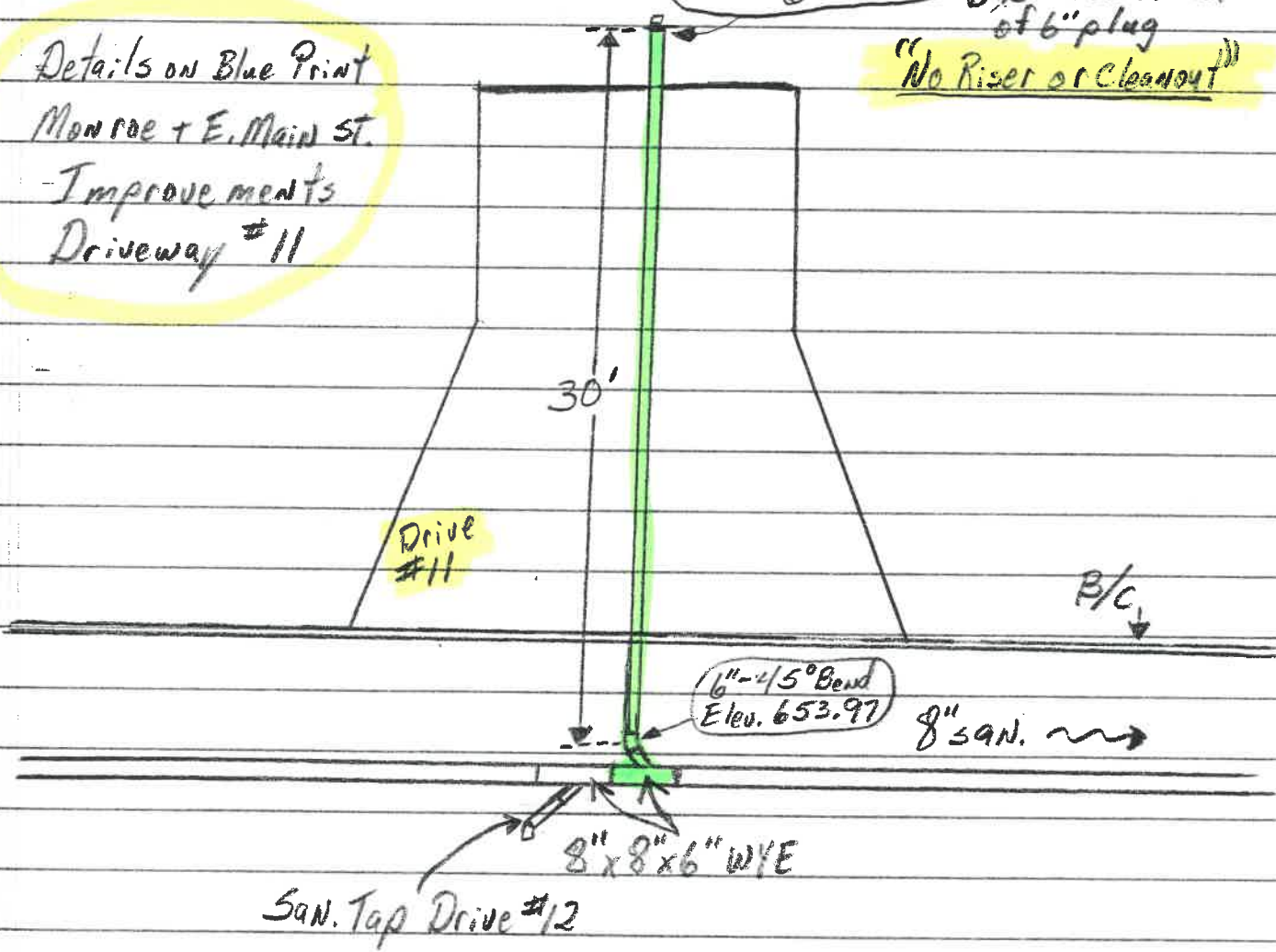
Installed by: Vernon Nagel Constr.

Inspected by: Rex Moll

Details on Blue Print  
Monroe + E. Main St.  
- Improvements  
Driveway #11

F.L. 6" san. service  
8.75' Deep  
Elev. 654.53

Marked with  
6" Board at end  
of 6" plug  
"No Riser or Cleanout"



Drive #11

B/C

6" - 1/5° Bend  
Elev. 653.97

8" SAN.

8" x 8" x 6" WYE

SAN. Tap Drive #12